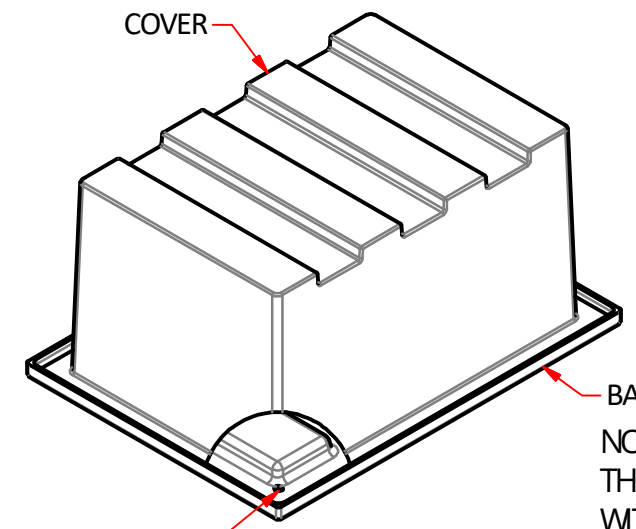
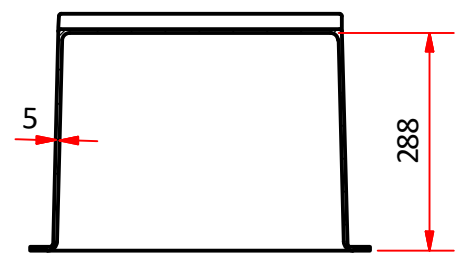


- NOTES:
 1. MATERIAL LDPE 5 mm NOMINAL WALL THICKNESS
 2. MATERIAL COLOUR BLACK
 3. USED IN CONJUNCTION WITH 14471 CONCRETE PIT WITH CLASS D LID

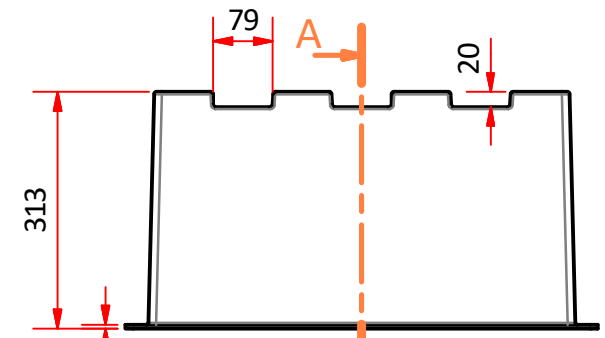


NOTE:
 THE PE BATTERY BOX IS TO BE INSTALLED WITH THE BASE AT THE BOTTOM

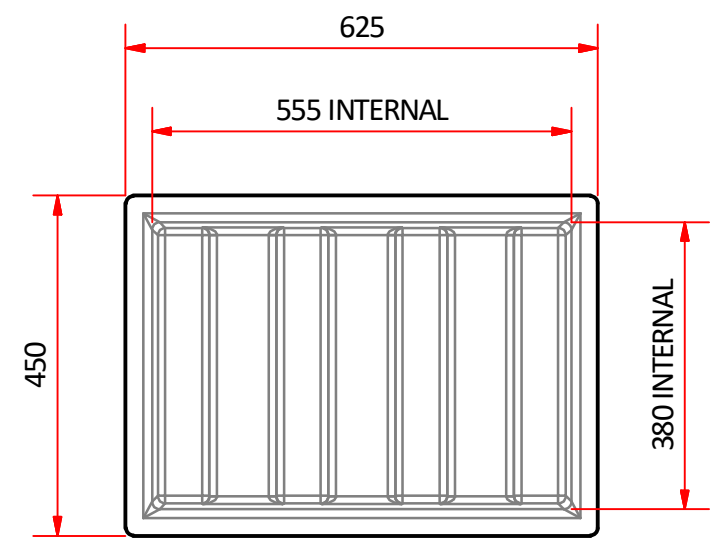
ASSEMBLY VIEW OF PE BATTERY BOX (1:10)



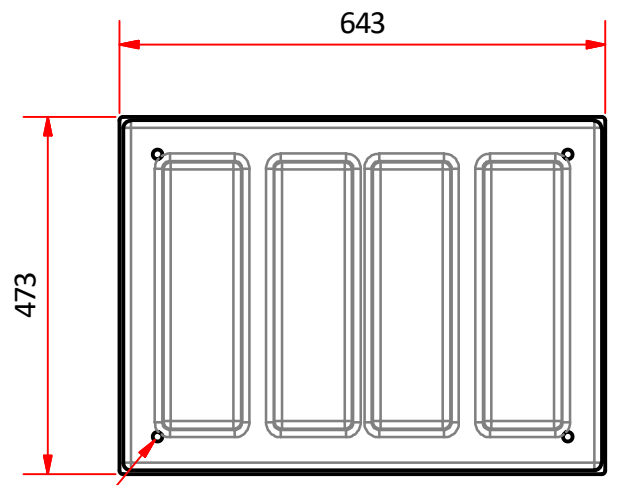
A-A (1:10)



COVER FRONT VIEW (1:10)

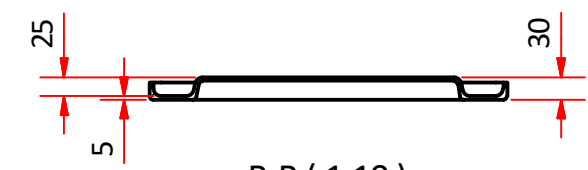


COVER BOTTOM VIEW (1:10)

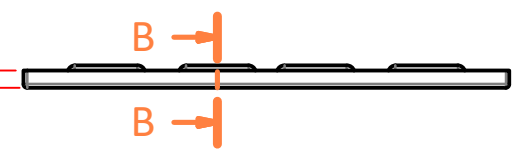


BASE TOP VIEW (1:10)

x4 ϕ 12 THRU HOLES FOR DRAINAGE



B-B (1:10)



BASE FRONT VIEW (1:10)

- General Notes;
 1. All dimensions are in mm
 2. Tolerance on all dimensions \pm 3 mm unless stated otherwise

Copyright: TRI Underground Australia Pty Ltd

This instruction and all the information herein is the property of TRI Underground PTY LTD. It must not be copied, made public or used directly or indirectly, including manufacture of the product shown herein, without written approval. This instruction is loaned subject to these conditions and subject to return on demand.

Commercial in confidence



Material LDPE	Designed by IMD	Checked by HL	Approved by HA	Date 23/03/2022	Date 22/01/2022
Weight APPROX. 6 kg	TRI Underground Australia			Title PE BATTERY BOX	
Finish OFF MOULD				Dwg No. 14479	Sheet 1 / 1